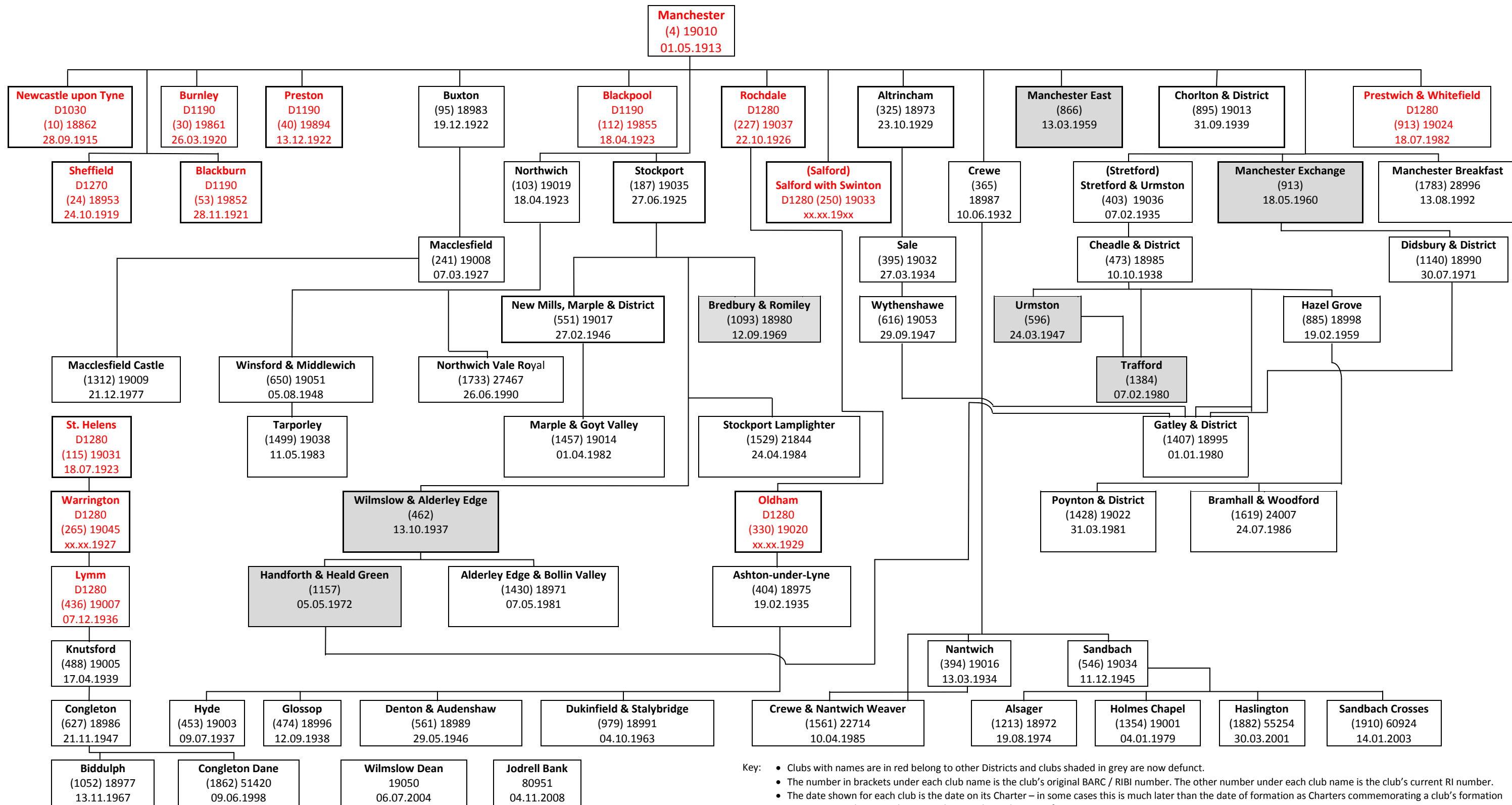


**Rotary International District 1050 Club Genealogy**  
 (updated by PDG Mike Payne and AG Robert Strachan, 2010. All dates are in dd-mm-yyyy format)

The credit for this "family tree" goes to PDG Bernard Needham who originally developed it in response to a request from Chris Boyes when he was DG in 2003-04. In his notes with the original tree Bernard mentioned,

*"It involved some interesting research. For example, it revealed a sort of immaculate conception experienced by R/C of St. Helens (this whilst determining the mother club of R/C of Knutsford). St. Helens, you see, had no mother and current members could not shed any light. However, in the early 1920s a good many Clubs formed themselves, usually guided by a single Rotarian, and then sought affiliation to The British Association of Rotary Clubs (BARC), the forerunner of RIBI. So the chain of St. Helens, Warrington, Knutsford, Congleton, Biddulph and Congleton Dane has a beginning shrouded in mystery."*



- Key:
- Clubs with names in red belong to other Districts and clubs shaded in grey are now defunct.
  - The number in brackets under each club name is the club's original BARC / RIBI number. The other number under each club name is the club's current RI number.
  - The date shown for each club is the date on its Charter – in some cases this is much later than the date of formation as Charters commemorating a club's formation were not issued in a timely manner by RI in the early years of Rotary.
  - R/C of Stretford renamed itself when the R/C of Urmston closed on July 1, 2004 and the members joined R/C of Stretford.
  - R/C of Chorlton & District was formerly the R/C of Manchester South.
  - R/C of Salford renamed itself when the R/C of Swinton & Pendlebury closed on 1<sup>st</sup> May 2005 and the members joined R/C of Salford
  - R/C of Wilmslow Dean was formed by members from R/C of Wilmslow & Alderley Edge and R/C of Handforth & Heald Green when they closed.
  - R/C of Jodrell Bank was formed without a 'Mother' club.
  - Clubs chartered prior to the formation of RIBI in 1922 belonged to *The British Association of Rotary Clubs (BARC)*.

Notes:

Additional information came to light during the updating of the original tree:

- **R/C of Manchester** was founded on 14<sup>th</sup> December 1911. Their Charter carries a note that “The club was formed before the general issue of Charters to Rotary Clubs” and their original RI Club No. was 66.
- **R/C of Rochdale** was chartered as RI Club No. 2419 and also “Mothered” the **R/C of Bury** in 1927, **RC of Oldham** in 1929, **R/C of Middleton & Heywood** in 1933 and **R/C of Rochdale East** in 1970.
- **R/C of Oldham** also “Mothered” the **R/C of Crompton & Royton** in 1955.
- **R/C of Rotherham** was shown on earlier versions of this tree as having been “Mothered” by R/C of Manchester but their own records indicate that it was R/C of Sheffield that had that honour.